



Goldhurst House, Hammersmith  
W6

GARTON JONES.COM



# Goldhurst House, Hammersmith , W6

GARTON JONES.COM

13 Park Street  
Chelsea Creek  
London  
SW6 2FS

Sales +44 (0) 20 7824 7090  
paul@gartonjones.com  
www.gartonjones.com

## £4,200,000 Leasehold

### Exceptional Three-Bedroom Apartment with River Views & Wraparound Balcony — Fulham Reach

An outstanding three-bedroom, three-bathroom apartment offering 2,019 sq ft (187 sq m) of luxurious living, featuring a wraparound south-facing balcony with panoramic views of the River Thames.

Set within the prestigious award-winning Fulham Reach development, the home boasts a 29 ft x 25 ft open-plan living and dining area, a bespoke kitchen with Miele appliances, and floor-to-ceiling windows that fill the apartment with natural light. Each bedroom is generously sized with ensuite bathrooms and fitted wardrobes, while the principal suite includes a dedicated dressing area. A guest cloakroom and extensive built-in storage complete the property.

Residents enjoy exclusive access to the Tamesis Club, including 24-hour concierge, swimming pool, sauna, steam room, treatment room, screening room, virtual golf simulator, snooker room, wine cellar, and a Wi-Fi-enabled lounge. On-site amenities include Tesco Express, Bread Lab Bakery, The Blue Boat Bar, and Brasserie Blanc.

Prime Connectivity: Approx. 4-minute walk to Hammersmith Underground Station (District, Piccadilly, Hammersmith & City, and Circle Lines), providing easy access to Central London, Heathrow, and beyond.

A rare opportunity to secure a luxury riverside home with exceptional space, views, and amenities.

Lease 999 from 2016  
Service Charge TBC  
Ground Rent TBC

Council Tax — London Borough Of Hammersmith & Fulham — Band H  
EPC — B (88)

- Three Bedroom Apartment
- Three Ensuities
- Master Bedroom With Dressing Area
- 2nd Floor With Lift
- South Facing Wrap Around Balcony With River Views
- 2019sqft (187.6sqm)
- Luxury Apartment
- Modern Kitchen Area With Built In Miele Appliances
- First Class Residents Onsite Facilities
- Swimming pool, Gym, Sauna, Spa, Cinema, Snooker Room, Wine Cellar, Virtual Golf & 24-Hour Concierge



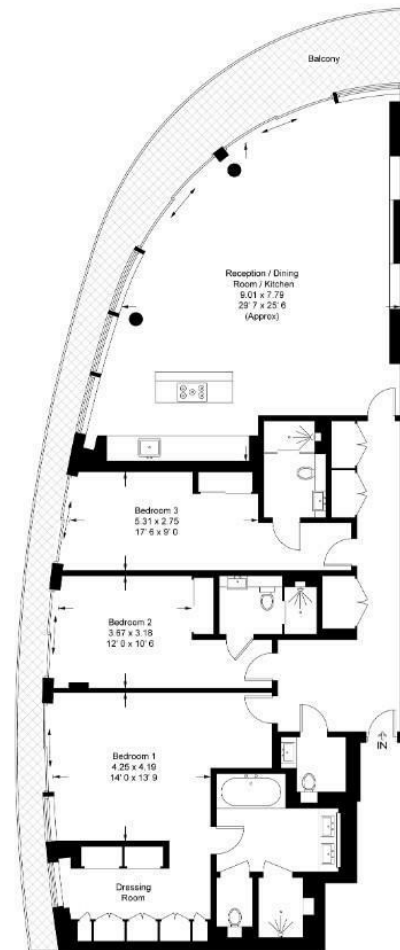
EPC certificate available on request.

## Goldhurst House

Approximate Gross Internal Area = 2019 sq ft / 187.6 sq m

Balcony = 345 sq ft / 32.1 sq m

GARTON JONES  
LONDON



This plan is not to scale and must be used as layout guidance only. All measurements and areas are approximate and should not be relied upon to provide accurate information. This plan must not be relied upon when making property valuations, design considerations or any other such relevant decisions. We accept no responsibility or liability (whether in contract, tort or otherwise) in relation to any loss whatsoever arising from or in connection with any use of this plan or the adequacy, accuracy or completeness of it or any information within it.





